

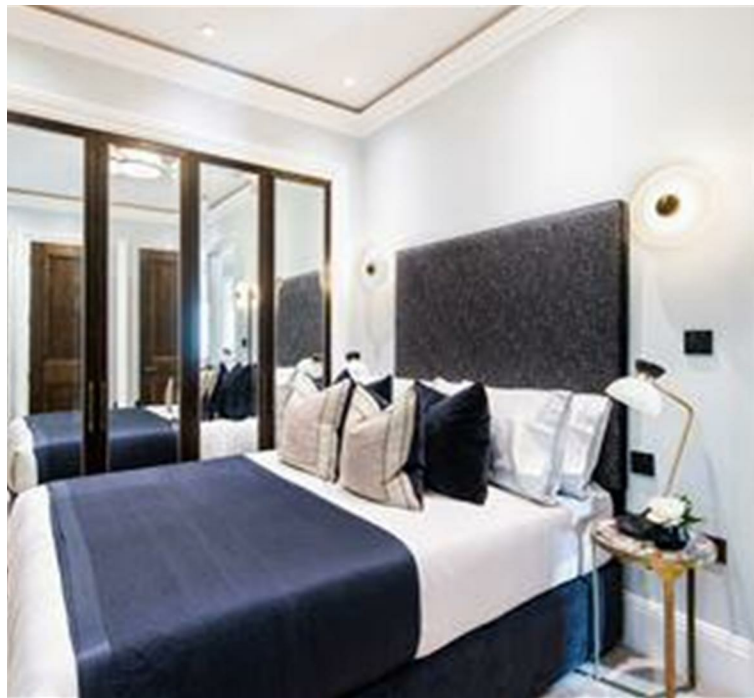


STURGES  
LONDON

Prince of Wales Terrace, Kensington  
£16,900 Per calendar month



- Broadband | CCTV | Digital TV
- Available furnished or unfurnished
- Lifts | Recycling | Shops | Video Entry | Wifi



STURGES  
LONDON





## Prince of Wales Terrace, London

We are delighted to bring to market an exquisite 1st Floor two-bedroom apartment located in the heart of the Royal Borough of Kensington & Chelsea, a stones throw from Kensington Palace.

The apartment boasts a wonderful sense of space and volume throughout with high ceilings and well-apportioned rooms flooded with natural light. Period features throughout. Elegant French doors lead out onto a private balcony offering a serene entertaining space, perfect for warm London nights.

This elegant apartment offers impressive entertaining spaces and comprises a grand reception room, master bedroom with; an ensuite, walk-in closet and private balcony via French doors, a guest bedroom with an ensuite bathroom, a fully integrated kitchen that leads onto a private balcony and a guest powder room. Smart TVs with Sonos soundbars.

Close to the shopping and dining centres of Kensington High Street and South Kensington whilst only a short walk from Kensington Palace and Hyde Park, this enchanting home is excellently located for London living. Notting Hill, Knightsbridge and Mayfair are a short tube or cab ride away.

Pet friendly with on-street parking available via a paid permit.

**Local Authority:**

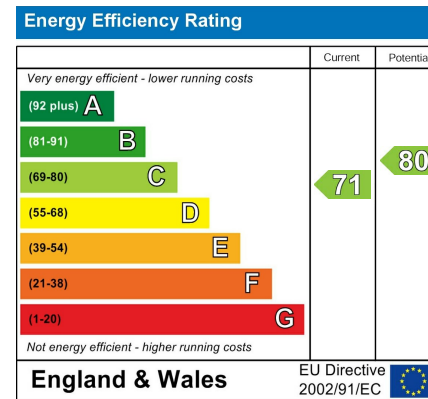
**Council Tax Band:** G

**Lease:** Add text here

**Service Charges:** Add text here

**Ground Rent:** Add text here

**STURGES**  
LONDON



## For more information, please contact:

(Tel) 020 3393 2002

(Email) [hello@sturgeslondon.co.uk](mailto:hello@sturgeslondon.co.uk)

668 Fulham Road, Parsons Green, London, SW6 5RX

[sturgeslondon.co.uk](http://sturgeslondon.co.uk)

Agents Note: Whilst every care has been taken to prepare these particulars, they are for guidance purposes only. All measurements are approximate and for general guidance purposes only and whilst every care has been taken to ensure accuracy, they should not be relied upon and potential buyers/tenants are advised to recheck the measurements.